


# How do I repay my student loan?



 This page of the factsheet is for Plan 1 and Plan 2 income-contingent student loans only. The next page covers repayment of post-graduate loans. For more information on the rates and worked examples see the [Student Loans section](#) of our website



\* You can check this at [www.studentloanrepayment.co.uk](http://www.studentloanrepayment.co.uk)

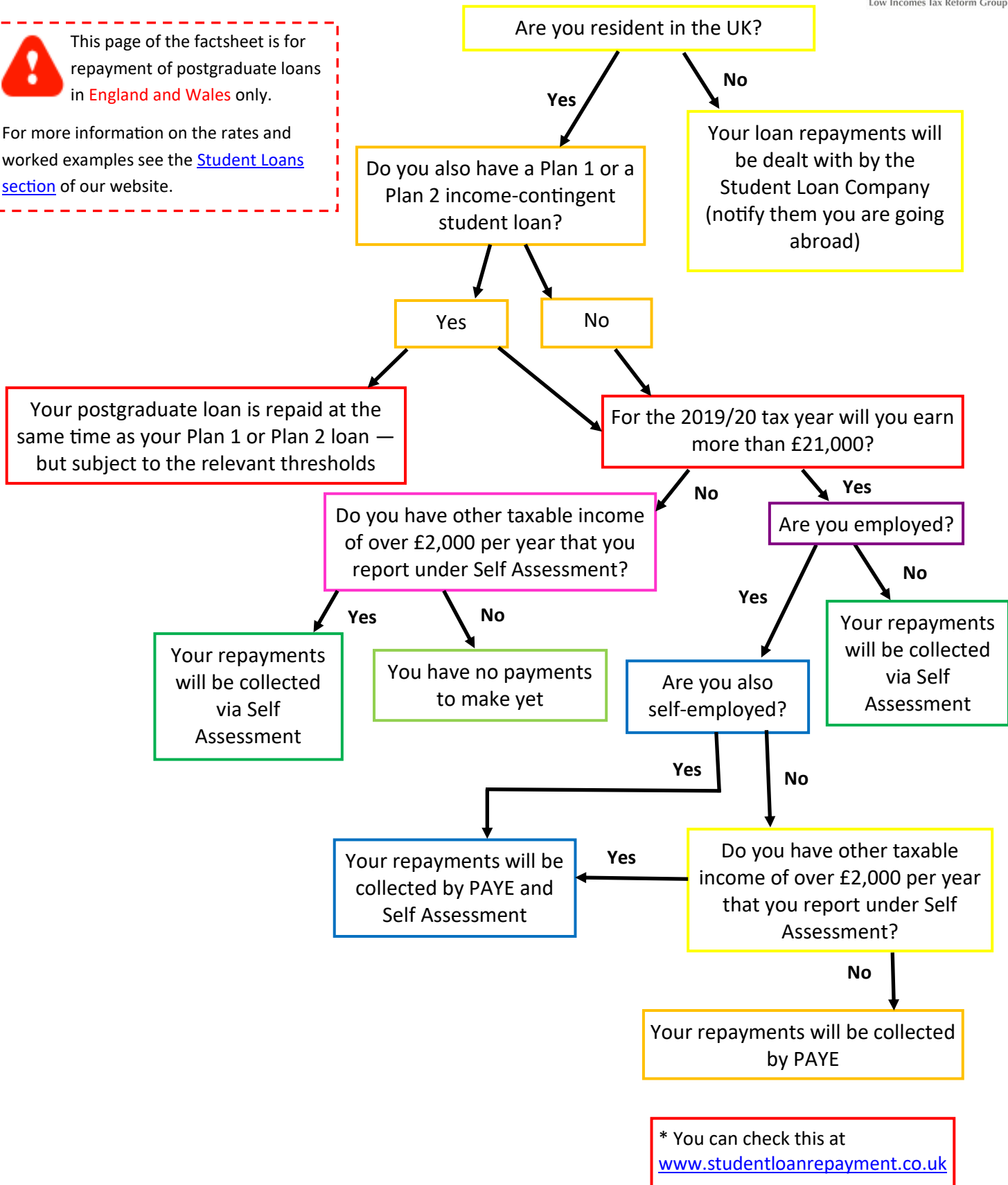
**This factsheet is intended to provide general information only and does not constitute advice.** Before taking any action, you should get appropriate immigration, benefit or tax advice, which is based on your particular circumstances, from a professional adviser. We have done our best to ensure that the information in this factsheet is up to date as of April 2019. You can read our full disclaimer on our website: <https://www.taxguideforstudents.org.uk/about/legal>

# How do I repay my postgraduate student loan?



This page of the factsheet is for repayment of postgraduate loans in **England and Wales** only.

For more information on the rates and worked examples see the [Student Loans section](#) of our website.



**This factsheet is intended to provide general information only and does not constitute advice.** Before taking any action, you should get appropriate immigration, benefit or tax advice, which is based on your particular circumstances, from a professional adviser. We have done our best to ensure that the information in this factsheet is up to date as of April 2019. You can read our full disclaimer on our website: <https://www.taxguideforstudents.org.uk/about/legal>